

# FURUNO



## Total Control, Simply Refined

# NAVnet

## TZ2 touch



[www.furuno.com](http://www.furuno.com)

Beware of similar products

All brand and product names are registered trademarks, trademarks or service marks of their respective holders.

SPECIFICATIONS SUBJECT TO CHANGE WITHOUT NOTICE

#### FURUNO ELECTRIC CO., LTD.

Nishinomiya, Hyogo, Japan  
[www.furuno.com](http://www.furuno.com)

#### FURUNO U.S.A., INC.

Camas, Washington, U.S.A.  
[www.furunousa.com](http://www.furunousa.com)

#### FURUNO (UK) LIMITED

Havant, Hampshire, U.K.  
[www.furuno.co.uk](http://www.furuno.co.uk)

#### FURUNO FRANCE S.A.S.

Bordeaux-Mérignac, France  
[www.furuno.fr](http://www.furuno.fr)

#### FURUNO ITALIA S.R.L.

Gatteo Mare, Italy  
[www.furuno.it](http://www.furuno.it)

#### FURUNO ESPAÑA S.A.

Madrid, Spain  
[www.furuno.es](http://www.furuno.es)

#### FURUNO DANMARK A/S

Hvidovre, Denmark  
[www.furuno.dk](http://www.furuno.dk)

#### FURUNO NORGE A/S

Ålesund, Norway  
[www.furuno.no](http://www.furuno.no)

#### FURUNO SVERIGE AB

Västra Frölunda, Sweden  
[www.furuno.se](http://www.furuno.se)

#### FURUNO FINLAND OY

Espoo, Finland  
[www.furuno.fi](http://www.furuno.fi)

#### FURUNO POLSKA Sp. z o.o.

Gdynia, Poland  
[www.furuno.pl](http://www.furuno.pl)

#### FURUNO EURUS LLC

St. Petersburg, Russian Federation  
[www.furuno.com.ru](http://www.furuno.com.ru)

#### RICO (PTE) LTD

Singapore  
[www.rico.com.sg](http://www.rico.com.sg)

#### FURUNO DEUTSCHLAND GmbH

Reilingen, Germany  
[www.furuno.de](http://www.furuno.de)

#### FURUNO HELLAS S.A.

Piraeus, Greece  
[www.furuno.gr](http://www.furuno.gr)

#### FURUNO (CYPRUS) LTD

Limassol, Cyprus  
[www.furuno.com.cy](http://www.furuno.com.cy)

#### FURUNO SHANGHAI CO., LTD.

Shanghai, China  
[www.furuno.com/cn](http://www.furuno.com/cn)

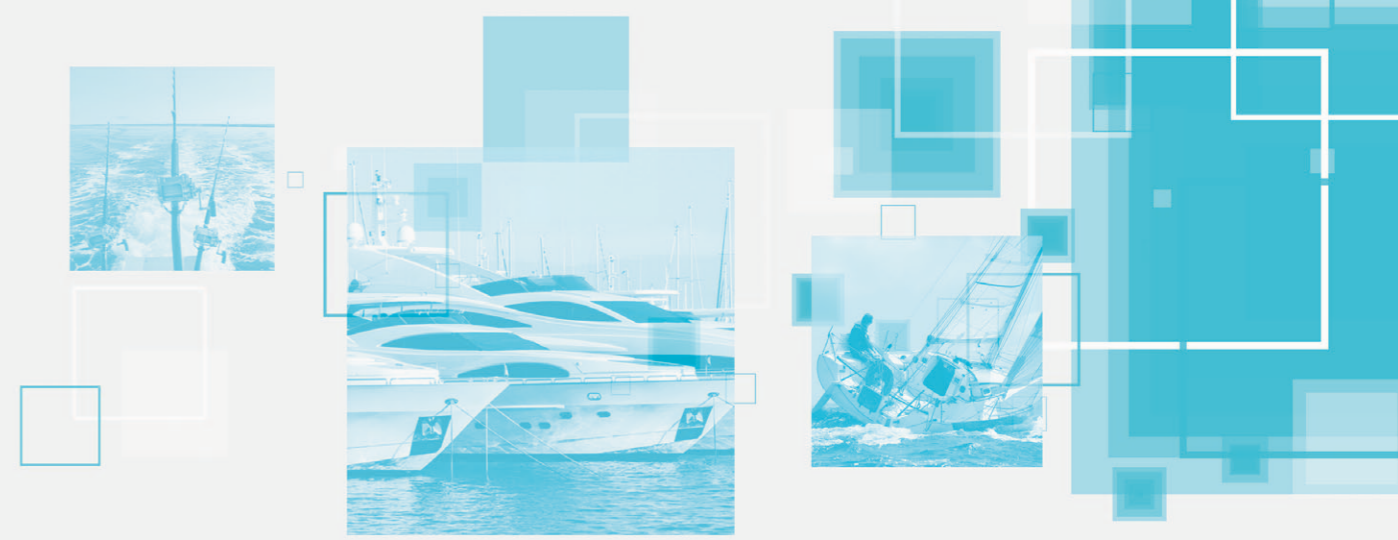
15015SK Printed in Japan  
Catalogue No. R-207



[www.navnet.com](http://www.navnet.com)

# Total Control, Simply Refined

With a sleek all glass front, refined graphical user interface, built-in RezBoost™ Fish Finder, and internal GPS antenna, NavNet TZtouch2 is a beauty to behold and use.

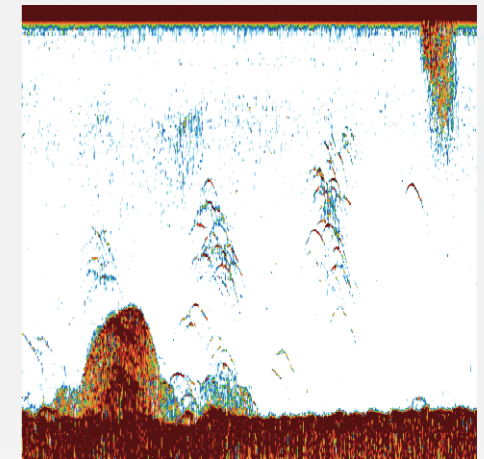


**NEW**

## RezBoost™

NavNet TZtouch2 features a built-in Fish Finder that uses revolutionary new RezBoost™ technology.

>> See page 13 for details



## Instrument Display & Customization

An instrument display like nothing you have seen before. Totally customizable, totally simple.

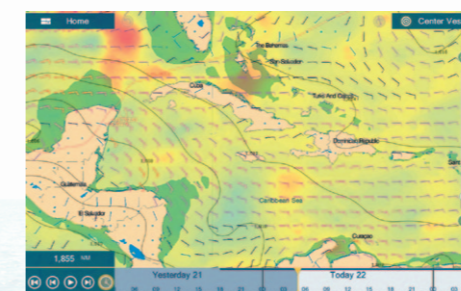
>> See page 6 for details



## Refined User Interface

The User Interface has been completely reworked and refined, ensuring quick and easy operation.

>> See pages 5-6 for details

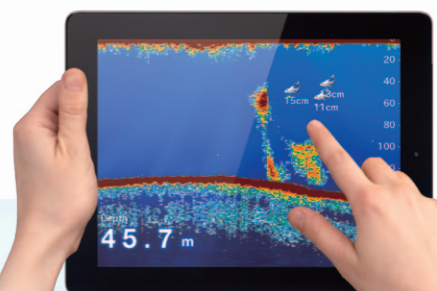


## Wireless Hotspot Connectivity

With an internet connection, NavNet TZtouch2 can wirelessly access real-time weather data, Community Charts\*, Cloud Data Services\* and more.

>> See page 8 for details

\*Coming soon



## iOS™ & Android™ Apps

View information from your NavNet TZtouch2 and control it on your iOS™ and Android™ devices.

>> See page 7 for details

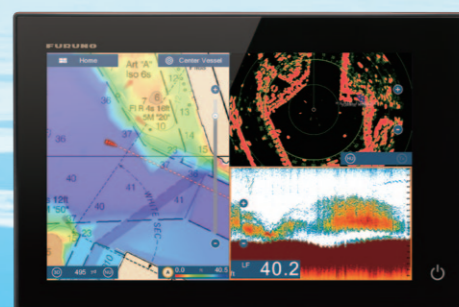


## Simply refined, simply beautiful

Following in the footsteps of the original NavNet TZtouch, TZtouch2 features a refined user interface that is all about usability. Whether you are searching for hot fishing grounds, plotting your next route, using your Radar to navigate through the fog, you can expect smooth operation with familiar touch gestures. Sporting an edge-to-edge glass front, NavNet TZtouch2 is beautifully designed, allowing you to build a navigation suite that is not only functional, but offers a luxurious look and feel.



All-glass front, smooth to the touch



Model **TZTL12F**  
**12.1" Multi Function Display**

Resolution: WXGA (1280 x 800 pixels)  
Brightness: 1300 cd/m<sup>2</sup> (typical)



Model **TZTL15F**  
**15.6" Multi Function Display**

Resolution: FWXGA (1366 x 768 pixels)  
Brightness: 1100 cd/m<sup>2</sup> (typical)



### Bonded LCD - Clear Readability

Our bonded LCDs offer a fog-free design that is used in both the TZTL12F and TZTL15F. This bonding ensures that the display is protected from condensation by sudden temperature changes. Optical bonding works by closing the air gap between the LCD and the cover glass, something that also enhances contrast.



### Polarized Friendly - Clearly Remarkable

NavNet TZtouch2 TZTL12F and TZTL15F have an LCD screen that does not "black out" when wearing polarized sunglasses. You are free to move around the vessel while maintaining clear visibility from virtually any angle.



### Multi Touch Control

With NavNet TZtouch, FURUNO introduced the industry's first multi touch MFD, and NavNet TZtouch2 is no disappointment. Improved touch control gives better response, as well as allowing you to swipe your fingers from the edge of the screen. Looking around your vessel in 3D, with the comprehensive charts available, Multi Touch Control makes navigating as simple as touch... and go!

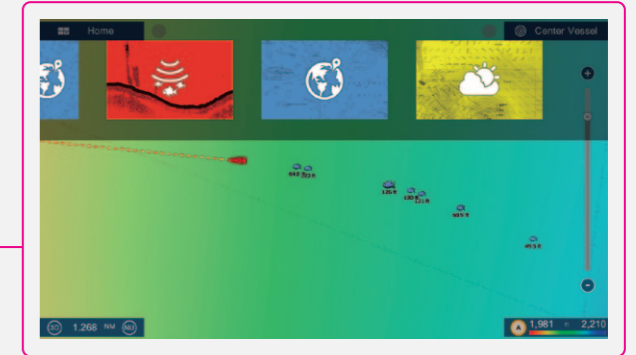
# New Graphical User Interface

NavNet TZtouch2 features a graphical user interface that has been renewed and refined, focusing on usability and ease of operation.



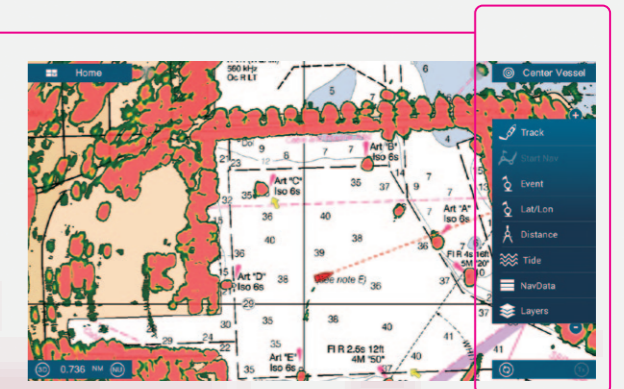
## NavData

Swiping from the left edge of the screen reveals the NavData panel, where you can customize contents to simplify navigation and chart usage. You can set the autopilot, check tide information and much more.



## Quick Page

Swiping your finger down from the top edge of the screen displays the Quick Page. As the name implies, the Quick Page allows you to quickly change between the different screens from your current display. With bold colors, the previews are easy to differentiate and quickly choose from.



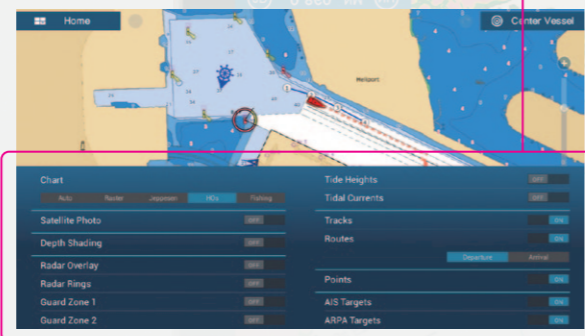
## Slide-Out Menu

The slide-out menu provides quick and easy access to often-used functions, and is available in every mode.



## Home Screen

The new home screen, with its bright and crisp graphics, is easy to understand and operate. The colors and icons have been carefully chosen to provide maximum visibility, allowing you to know instantly which screen is displayed, just by seeing the color and icon. Changing to different display screens is just a simple matter of dragging and dropping.



## Layers

One of the new features is the layers menu, just swipe up from the bottom edge of the screen. The layers menu is a practical way of changing settings on the fly without having to venture into deeper menu systems. Since the screen is visible at all times, understanding and using the different settings becomes a breeze.



## Fully Customizable

Arrange instruments by the touch of your finger. You are free to customize the display to precisely fit your unique needs. Also note that instruments can overlap each other, giving you even more space to work with.



## Instruments

The instrument page is impressive just on its own rights, but where it really shines is its customizability. No matter if it is for navigation, engine and tank monitoring, autopilot control or all together, data can be displayed according to your personal tastes and needs.

## APPS

View information from your NavNet TZtouch2 and control it on your iOS™ and Android™ devices.



### NavNet Viewer App

Conveniently view instruments, as well as the fish finder of your NavNet TZtouch2 on your smart devices over a Wireless LAN network. Key navigational information such as Depth, Temperature, Wind, COG and Engine information can all be accessed from the palm of your hand. Even if you change the display on your NavNet TZtouch2, you can still view the fish finder on your smart devices.



NEW



### NavNet Controller App

Wirelessly control any NavNet TZtouch2 MFD with touch controls. With a scroll pad, cursor pad and dedicated keys within the app, controlling NavNet TZtouch2 is simple and straightforward.



\*Available on App Store for iOS™ devices later in 2015

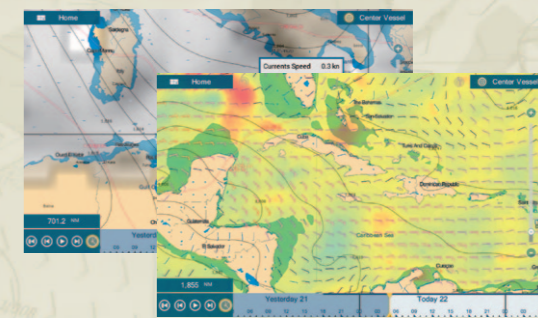


## WIRELESS



### Marine Weather Forecast

The weather tool is completely free and easy to use, giving you unlimited access to weather forecasts worldwide 24 hours a day provided by NavCenter. Select the coverage you want, what type of data it is you need and for what time period, then it is simply a matter of choosing how to download the data. Navnet TZtouch2 can display up to 16 days of downloaded weather forecasting.



### ActiveCaptain\*

With access to the ActiveCaptain database from the convenience of your NavNet TZtouch2, there are many new discoveries ahead. After downloading the latest information to your TZtouch2, you can browse and discover new points of interest shared by other users. Find recent information about fuel rates at nearby harbors, fishing grounds and much more.

\*Coming soon



### Community Charts\*

Community Charts is a new layer of the MapMedia charts where users can update and modify chart information. Users can report changes such as chart depth, position of chart symbols, temporary obstructions, sunken ships, etc. which will get reviewed by MapMedia and shared among all the NavNet TZtouch2 users. Every time you connect your NavNet TZtouch2 to the internet you will automatically get the very latest chart information.

\*Coming soon

### My TimeZero Cloud Data Service\*

My TimeZero cloud data service allows you to back up your data and synchronize it among your TimeZero devices, as well as sharing it with your friends. Just connect your NavNet TZtouch2 to the internet and create a TimeZero account, and your points, routes, tracks and settings are automatically backed up to a remote server. You won't have to worry about losing your data ever again. Plan routes on your iPad at home and transfer them to your NavNet TZtouch2 instantaneously through cloud services. Sharing data, such as favorite fishing spots and cruising routes with your friends couldn't be any simpler.

\*Coming soon

NEW

### BBWX3 – Sirius Satellite Weather Receiver\*

Keeping track of weather is easier than ever with Furuno's BBWX3 Third-Generation Sirius Satellite Weather Receiver! The weather information is obtained from the weather industry's leading experts and is delivered via digital receiver through Sirius' Marine Weather services. You can receive high-quality and comprehensive weather information and forecasting for use while navigating.



\*Satellite weather receiver service is available for all NavNet TZtouch2, TZtouch and NavNet 3D models. Requires Sirius weather service subscription, sold separately. Sirius weather coverage is currently available only in U.S and Canada.

# NavNet TZtouch2 Network



## Perfect match!

NavNet TZtouch2, NAVpilot-711C and the FI-70 have been designed to match each other beautifully, both in appearance and in function. Sporting a clean and functional design in all black, they will make a great addition to your helm.



NavNet TZtouch2



NAVpilot-711C



FI-70

### RADAR



Radar Sensor  
DRS2D/DRS4D/DRS4DL\*  
DRS4A/DRS6A/  
DRS12A/DRS25A

CAN bus Ethernet

\*DRS4DL is Ethernet only

### AUTOPILOT



NAVpilot-700



NAVpilot-711C

### FISH FINDER\*1



Network Fish Finder  
DFF1-UHD/DFF1/DFF3

Bottom Discrimination Sounder  
BBDS1

### AIS



AIS Receiver  
FA-30

Class-B AIS Transponder  
FA-50

Class-A U-AIS Transponder  
FA-150

### WEATHER/ PC PLOTTER



MaxSea/Nobeltec  
TimeZero PC Software

Network Weather  
Facsimile Receiver  
FAX-30

Network Satellite Weather  
and Radio Receiver  
BBWX3\*2

### CAMERA/AUDIO



Marine Entertainment System  
MS700 Series, etc.

Analog Camera

### CONVERTER



NMEA Data Converter  
IF-NMEA2K2

Analog NMEA Data Converter  
IF-NMEA1



### COMPASS



Satellite Compass  
SC-30

Integrated Heading Sensor  
PG-700

### GPS\*3



GPS/WAAS  
Receiver Antenna  
GP-330B

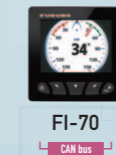
GPS Navigator  
GP-33

### SENSOR



Depth/Speed/Temp Sensor  
DST-800

### INSTRUMENT



FI-70

GPS Internal Antenna

Internal Fish Finder with RezBoost™ technology

NMEA2000 Certified

NavNet TZtouch2 is NMEA2000 certified. NMEA2000 offers improved data transfer rates and true plug-and-play operation.

Remote Control Unit  
MCU-002

SD Card Unit  
SDU-001

### OPTION

\*1 External Fish Finders can also be connected to NavNet TZtouch2. The internal and external Fish Finder cannot operate simultaneously. Through the settings menu it is possible to choose which one to use.  
\*2 Sirius weather coverage is currently available only in U.S and Canada. Sirius subscription required.  
\*3 External GPS antennas and navigators can also be connected to NavNet TZtouch2. Through the settings menu it is possible to choose which one to use.

# Nothing Is Faster Than TimeZero™

NavNet TZtouch2's TimeZero™ technology delivers chart processing like you've never seen before – seamless chart handling, zooming and panning without the screen disappearing. TimeZero™ technology redefines the meaning of stress-free operation by smoothing out your chart handling actions.



## The Only Acceptable Wait Time is Zero: TimeZero™ Technology Changes Your Perspective on Chart Redraw

Equipped with powerful TimeZero™ technology, NavNet TZtouch2 will completely transform the way you navigate. You can scroll, pan, zoom in/out with a smooth, fast and seamless graphics engine. Navigating in a 3D environment offers you a true perspective and wider area of view around the ship, which allows you to better plan your routes. TimeZero™ technology updates the information on your screen with virtually no redraw as you go.



# Chart Plotter

## Mapmedia Vector and Raster Chart Library

With NavNet TZtouch2 it's possible to freely choose the charts that fit your individual needs. With the optional NOAA raster and vector charts, Mapmedia brings an authentic vector and raster chart library to your NavNet TZtouch2. "C-MAP by Jeppesen" as well as "Datacore by Navionics" vector cartography are optional charts that can be downloaded to your TZtouch2 with ease. Mapmedia cartography integrates cutting edge algorithms with high resolution image processing techniques to deliver a fusion of digital navigation charts and satellite photography.



2D Raster

2D Vector

## Satellite PhotoFusion™

Satellite photography is included in the Mapmedia Raster and Vector charts, simply called Satellite PhotoFusion™. Land areas (zero depth) are completely opaque, displayed as satellite photos on the chart. As the depth increases, the satellite image is merged with the chart data to provide you with added detail on seabed areas in shallow water, without losing vital chart information. In deeper water, where the satellite photos have no detail to offer, the chart is displayed without alteration.

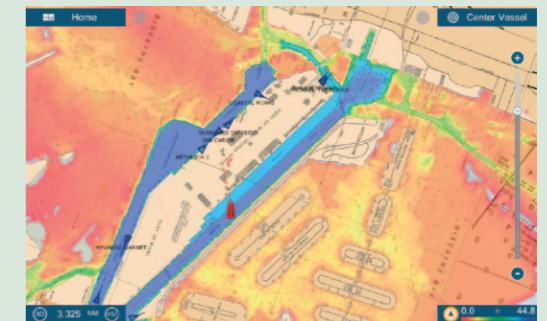


Raster+Satellite

Vector+Satellite

## Depth Shading

A depth color scale can be applied to both 2D and 3D vector and raster charts. Transparency levels can be adjusted so that chart data is visible beneath the color shading. This unique feature allows you to view water depths at-a-glance with vibrant colors. No more searching for depth numbers, when you can simply set depths to your specified colors. Whether you want to see the depth for navigation or fishing purposes, this feature makes it easier than ever before.



## AIS Target Tracking

When connecting a FURUNO FA-30/50/150 AIS unit to your NavNet TZtouch2, up to 100 AIS targets can be tracked and displayed on the Chart Plotter screen. The Automatic Identification System (AIS) improves safety during travel by sharing the status and position of your vessel with other AIS-equipped vessels nearby. You can easily read detailed information about AIS-equipped vessels nearby such as speed, heading, Closest Point of Approach and Time to Closest Point of Approach.



# Fish Finder

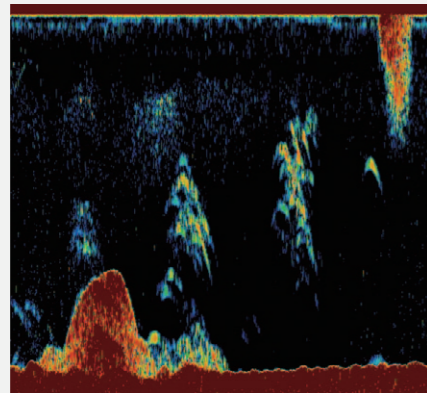
NavNet TZtouch2 is the first product from FURUNO to feature the brand new RezBoost™ technology. Accurately spot individual fish and increase your catch.

NEW

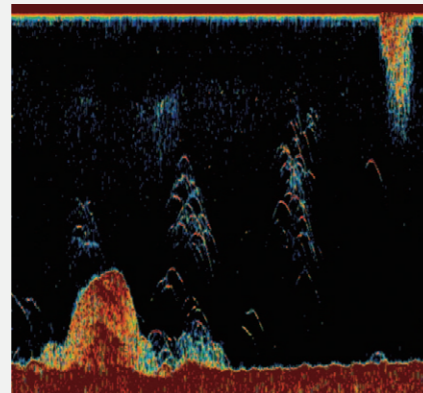


## RezBoost™

Rezboost™ is a revolutionary new technology utilizing FURUNO's advanced digital signal processing to provide fantastic resolution without having to change your transducer.



Conventional Signal Processing



RezBoost™ Signal Processing

RezBoost™ improves target separation close to the seabed, as well as giving an unprecedented boost in resolution. With RezBoost™ technology, resolution and target separation previously limited to FURUNO commercial-grade Fish Finders can now be achieved. RezBoost™ technology makes it easier to spot individual fish in tightly packed fish schools, as well as discerning game fish from bait fish. Since RezBoost™ technology is software based, you can use transducers\* already installed on your vessel.

\* For compatible transducers see FURUNO.com for further information. In-hull mounted transducers not compatible with RezBoost™ technology.

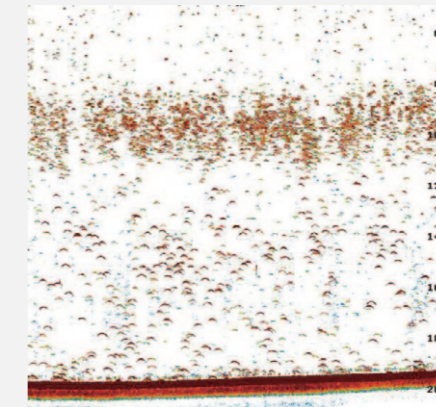
## FURUNO Digital Filter (FDF™) Fish Finder

FURUNO Digital Filter (FDF™) fish finders feature advanced filtering capabilities and digital auto tuning, which eliminates noise. FURUNO FDF™ fish finders deliver the ability to spot individual fish with clarity, accuracy and detail. Whether in shallow or deep water, FURUNO FDF™ fish finders give you what you would expect from a fish finder at all times. Includes post-processing gain control, which is applied to all existing returns on the display history.

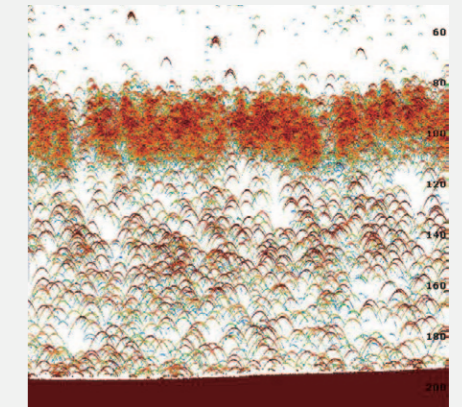


## Find More Fish With TruEcho CHIRP™ Fish Finder

An advanced technology for both professional and enthusiast fishermen. Designed to operate across a wide range of frequencies utilizing a broadband transducer, the TruEcho CHIRP™ network fish finder delivers significant advantages in signal clarity and target definition. Due to the constant sweep of frequencies the TruEcho CHIRP™ network fish finder is capable of gathering more and higher quality data than a traditional single frequency fish finder. The clear presentation marks individual game fish and bait fish, even when tightly schooled together.



High Frequency CHIRP



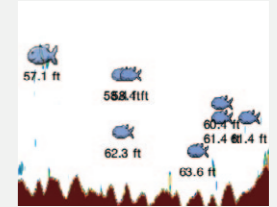
Low Frequency CHIRP



## ACCU-FISH™ (Fish Size Analyzer)

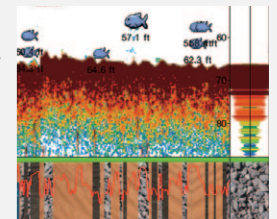
The ACCU-FISH™ algorithm analyzes echo returns in order to compute individual fish size. The algorithm is capable of computing fish size ranging from 10 cm up to 199 cm long. Fish depth can also be displayed.

In some instances, fish size indicated on the NavNet TZtouch2 may differ from its actual size. Please carefully read the operator's manual prior to utilizing this feature.



## Bottom Discrimination Display

Bottom discrimination provides detailed information about Knowing the make-up of the seabed, categorizing it into four different categories; "Rocks", "Gravel", "Sand" and "Mud". The make-up of the seabed can be tremendously helpful information when looking for fishing grounds, as well as for finding good anchoring spots.



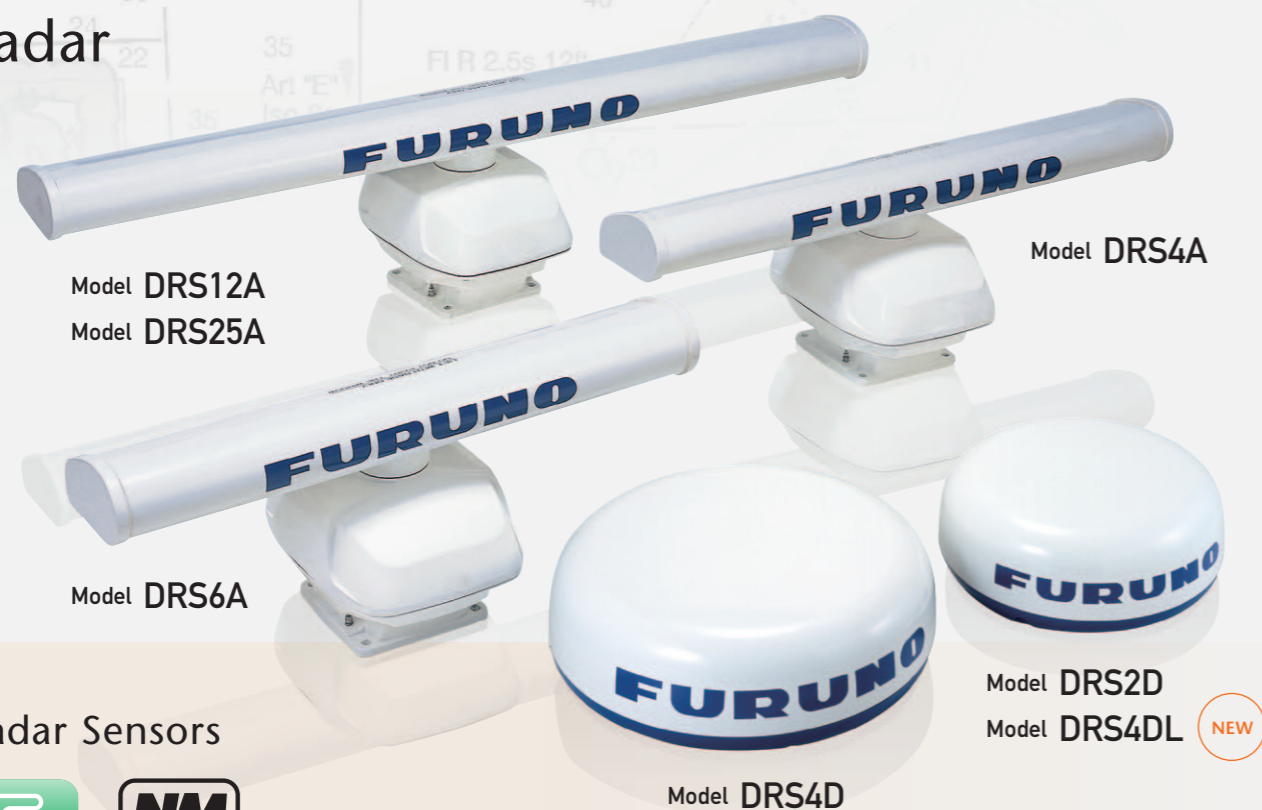
	Internal Fish Finder	BLACK BOX NETWORK FISH FINDER DFF1-UHD	BLACK BOX NETWORK FISH FINDER DFF3
Frequency	Dual frequency 50kHz and 200 kHz	Dual frequency 50±20 and 200±25 kHz	The synthesized transducer works with dual frequencies between 28 and 200 kHz
Range Scale	Up to 1,200 m		
Transducers	600 W or 1 kW*	1 kW	1, 2 or 3 kW
ACCU-FISH™	Available		
Bottom Discrimination	Available		
TruEcho CHIRP™	N/A	Available	N/A
RezBoost™	Available	N/A	

DFF1/BBDS1 are fully compatible with NavNet TZtouch2.

\*Matching Box MB-1100 required for some specific FURUNO transducers.



## Radar



## Radar Sensors



Winner of the NMEA awards  
2008, 2009, 2010, 2011,  
2012, 2013 and 2014

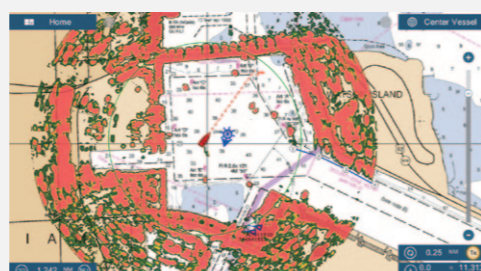
## Ultra High Definition (UHD™) Digital Radar

FURUNO has taken its NMEA award-winning radar technology to the next level with Ultra High Definition Digital Radar. UHD™ offers crystal clear target presentation with automatic real-time digital signal processing. The antenna rotation speed (24/36/48 rpm) is automatically shifted according to the pulse length needed for optimal performance. Commercial-grade radar performance is now available in the ultimate MFD navigation suite.



## Radar-Chart Overlay

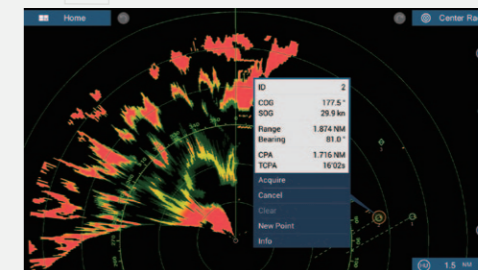
A Radar image of spot-on accuracy can be overlaid onto the chart screen on your NavNet TZtouch2. It's not just available in the conventional 2D chart format, but it can also be projected onto a 3D chart presentation. Depending on the range scale selected, the Radar-Chart Overlay adjusts accordingly. This allows you to view the Radar-Chart Overlay at whatever magnification level you find comfortable.



## ARPA Target Tracking

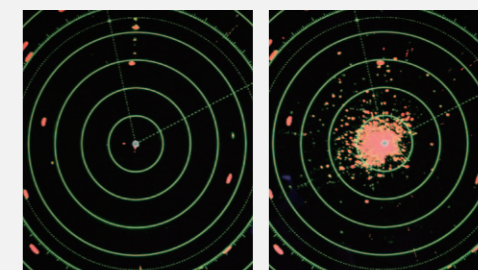
With ARPA Target Tracking enabled, up to 30 different targets can be tracked simultaneously. Targets can be acquired either manually or fully automatically. Automatic Radar Plotting Aid (ARPA) calculates the tracked objects course and speed, as well as the CPA (Closest Point of Approach). With this information, the Radar is capable of predicting possible collision courses and sound relevant alarms. In combination with AIS, this spells increased security and ease of mind on your vessel.

Not available on DRS4DL



## Real-Time Digital Auto Gain/Sea Controls

NavNet TZtouch2 employs revolutionary real-time digital auto Gain/Sea controls to deliver a crystal clear radar presentation. With this new technology, NavNet TZtouch2 computes and applies an adaptive omni-directional anti-clutter filter with variable intensity according to vessel bearing. With the use of this technology, automatic gain and sea clutter have achieved such a high level of proficiency that one rarely needs to venture into the manual modes. Set the Radar to auto and focus on more important things at hand.

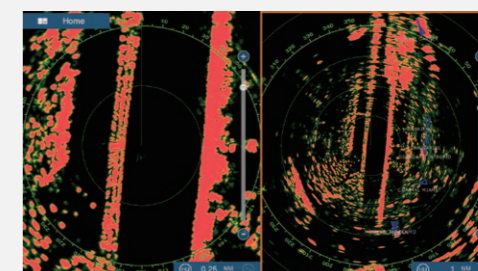


Auto Gain/Sea Controls On Auto Gain/Sea Controls Off

## Simultaneous Dual Range Radar Scanning

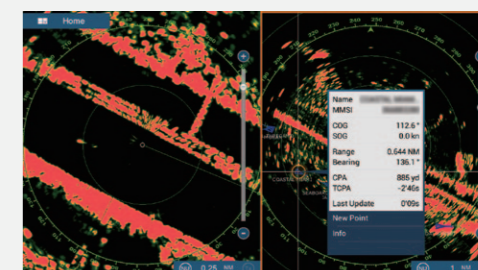
Simultaneous scanning technology sends out a dual progressive scan that is processed and presented on the NavNet TZtouch2. This technology allows for two different radar ranges to be displayed simultaneously, each range with autonomous control over gain and anti-clutter settings. One of the many things that can be done with dual range scanning is, for example, to set one range for bird detection and the other for navigation.

Not available on DRS4DL



## AIS Target Tracking

When connecting a FURUNO FA-30/50/150 AIS unit to the NavNet TZtouch2, up to 100 AIS targets can be tracked and displayed on the Radar screen. The Automatic Identification System (AIS) improves safety during travel by sharing the status and position of your vessel with other AIS-equipped vessels nearby. You can easily read detailed information about AIS-equipped vessels nearby such as speed, heading, Closest Point of Approach and Time to Closest Point of Approach.



## NavNet TZtouch2 Radar Sensor Options

	DRS2D	NEW DRS4DL	DRS4D	DRS4A	DRS6A	DRS12A	DRS25A
Output Power	2.2 kW	4 kW	4 kW	4 kW	6 kW	12 kW	25 kW
Size	19 inch	19 inch	24 inch	3.5 ft	4 ft	4 ft/6 ft	4 ft/6 ft
Antenna Type	Radome	Radome	Radome	Open	Open	Open	Open
Beam Width	Horizontal	5.2°	5.2°	4.0°	2.3°	1.9°	1.9°/1.4°
	Vertical	25°	25°	25°	22°	22°	22°/22°
Max. Range	24 nm	36 nm	36 nm	48 nm	64 nm	72 nm	96 nm
48 rpm Capability	•	—	•	•	•	•	•
Power Amp Unit required	PSU-017	—	PSU-017	PSU-012	PSU-012	PSU-012	PSU-013
Functions	Head-up, North-up*, Echo Trail, Target Tracking	Head-up, North-up*	Head-up, North-up*, Echo Trail, Target Tracking	Head-up, North-up*, Echo Trail, Target Tracking	Head-up, North-up*, Echo Trail, Target Tracking	Head-up, North-up*, Echo Trail, Target Tracking	Head-up, North-up*, Echo Trail, Target Tracking
Dual Range Scanning	•	—	•	•	•	•	•
ARPA	•	—	•	•	•	•	•

\* Heading input required.

The radar antenna complies with IEC62252 Ed.1:2004 (Clauses 4.33, 5.33, Annex D) relevant to radio characteristic.

# Specifications

Model TZTL12F

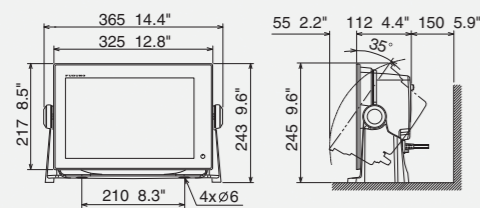


Bracket is optional supply.

MULTI FUNCTION DISPLAY		TZTL12F	
<b>DISPLAY UNIT</b>			
Type	Color TFT multi touch LCD		
Screen Size	12.1" Wide		
Screen Resolution	WXGA 1280 x 800		
Screen Brightness	1300 cd/m <sup>2</sup> (typical)		
Language	English (US & UK), French, Spanish, German, Italian, Dutch*, Turkish*, Portuguese, Swedish, Danish, Norwegian, Finnish, Greek, Russian*, Chinese (simplified Chinese characters), Japanese *Available in future update.		
<b>GPS/WAAS</b>			
Receiver Type	GPS	56 channels	
	SBAS	1 channel (C/A mode, WAAS)	
Receiving Frequency	L1 (1575.42 MHz)		
Time to First FIX	100 s (cold start)		
Tracking Velocity	999 kn		
SBAS	WAAS, EGNOS, MSAS		
<b>ACCURACY</b>			
Internal Antenna	GPS	10 m Max	
	WAAS	3 m Max	
	MSAS	7 m Max	
<b>CHART PLOTTER</b>			
Cartgraphy	MapMedia mm3d chart (Jeppesen/Navionics/NOAA)		
Memory Capacity	30,000 user points, 30,000 points for ship's tracks, 200 planned routes (500 points per route)		
Alarms	Anchor Watch, XTE, Proximity, Depth, Temperature, Speed, etc.		
<b>RADAR</b>			
Display Modes	Head-up, North-up* *Heading input required.		
Target Tracking**	30 Targets* *Heading input required.		
<b>FISH FINDER (Built-in)</b>			
Transmit Frequency	50/200 kHz		
Transmission Power	600 W or 1 kW* *Matching Box MB-1100 required for some specific FURUNO transducers		
Modes	RezBoost™, ACCU-FISH™, Bottom Discrimination, A-Scope, Auto (Fishing/Cruising/Manual), Bottom Zoom, Bottom Lock		
<b>INTERFACE</b>			
CAN bus/NMEA2000	1 Port		
Interface (CAN bus/NMEA2000)	Input	059392, 0593904, 060928, 061184, 065280, 126208, 126720, 126992, 126996, 127237, 127245, 127250, 127251, 127257, 127488, 127489, 127505, 128259, 128267, 129025, 129026, 129029, 129033, 129038, 129039, 129040, 129041, 129538, 129540, 129793, 129794, 129798, 129025, 129026, 129029, 129033, 129038, 129039, 129040, 129041, 129538, 129540, 129793, 129794, 129798, 129808, 129809, 129810, 130306, 130310, 130311, 130312, 130313, 130314, 130577, 130578	
	Output	059392, 059904, 060928, 061184, 126208, 126464, 126720, 126992, 126993, 126996, 127250, 127251, 127257, 127258, 128259, 128267, 129025, 129026, 129029, 129033, 129283, 129284, 129285, 130306, 130310, 130312, 130313, 130314	
NMEA0183	1 Integrated Output Port		
Interface (NMEA0183)	Output	CUR, DPT, GGA, GSA, HDG, HDT, MDA, MTW, MWV, RSA, ROT, VDM, VHW, VTG, XDR, ZDA	
LAN	1 Port (100 BASE-TX)		
USB	1 Port (USB2.0)		
Video Output	1 Port (HDMI)		
Video Input	2 Ports (NTSC/PAL)		
AUX I/O	1 Port (External Event/MOB Input/Operator Fitness/Alarm Output)		
SD Cart Slot	1 Slot (Micro SDXC, rear), 2 Slots Card Unit (optional)		
Wireless LAN	IEEE802.11b/g/n, Transmit frequency: 2.4 GHz band		
Transducer	1 Port		
<b>ENVIRONMENT</b>			
Temperature (IEC60945)	-15°C to +55°C		
Waterproofing	IP56		
<b>POWER</b>			
	12-24 VDC		
	3.0-1.5 A		

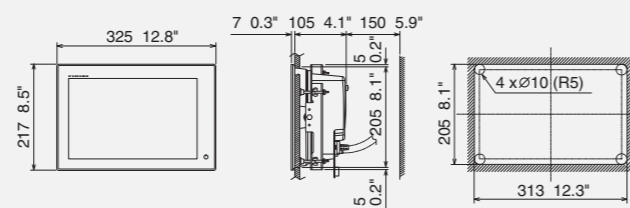
\*\* Not available with DRS4DL

Multi Function Display (Tabletop Mount) TZTL12F  
3.8 kg 8.4 lb



Bracket is optional supply.

Multi Function Display (Flush Mount) TZTL12F  
3.7 kg 8.2 lb



Model TZTL15F

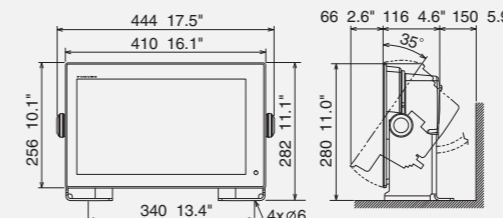


Bracket is optional supply.

MULTI FUNCTION DISPLAY		TZTL15F	
<b>DISPLAY UNIT</b>			
Type	Color TFT multi touch LCD		
Screen Size	15.6" Wide		
Screen Resolution	FWXGA 1366 x 768		
Screen Brightness	1100 cd/m <sup>2</sup> (typical)		
Language	English (US & UK), French, Spanish, German, Italian, Dutch*, Turkish*, Portuguese, Swedish, Danish, Norwegian, Finnish, Greek, Russian*, Chinese (simplified Chinese characters), Japanese *Available in future update.		
<b>GPS/WAAS</b>			
Receiver Type	GPS	56 channels	
	SBAS	1 channel (C/A mode, WAAS)	
Receiving Frequency	L1 (1575.42 MHz)		
Time to First FIX	100 s (cold start)		
Tracking Velocity	999 kn		
SBAS	WAAS, EGNOS, MSAS		
<b>ACCURACY</b>			
Internal Antenna	GPS	10 m Max	
	WAAS	3 m Max	
	MSAS	7 m Max	
<b>CHART PLOTTER</b>			
Cartgraphy	MapMedia mm3d chart (Jeppesen/Navionics/NOAA)		
Memory Capacity	30,000 user points, 30,000 points for ship's tracks, 200 planned routes (500 points per route)		
Alarms	Anchor Watch, XTE, Proximity, Depth, Temperature, Speed, etc.		
<b>RADAR</b>			
Display Modes	Head-up, North-up* *Heading input required.		
Target Tracking**	30 Targets* *Heading input required.		
<b>FISH FINDER (Built-in)</b>			
Transmit Frequency	50/200 kHz		
Transmission Power	600 W or 1 kW* *Matching Box MB-1100 required for some specific FURUNO transducers		
Modes	RezBoost™, ACCU-FISH™, Bottom Discrimination, A-Scope, Auto (Fishing/Cruising/Manual), Bottom Zoom, Bottom Lock		
<b>INTERFACE</b>			
CAN bus/NMEA2000	1 Port		
Interface (CAN bus/NMEA2000)	Input	059392, 0593904, 060928, 061184, 065280, 126208, 126720, 126992, 126996, 127237, 127245, 127250, 127251, 127257, 127488, 127489, 127505, 128259, 128267, 129025, 129026, 129029, 129033, 129038, 129039, 129040, 129041, 129538, 129540, 129793, 129794, 129798, 129025, 129026, 129029, 129033, 129038, 129039, 129040, 129041, 129538, 129540, 129793, 129794, 129798, 129808, 129809, 129810, 130306, 130310, 130311, 130312, 130313, 130314, 130577, 130578	
	Output	059392, 059904, 060928, 061184, 126208, 126464, 126720, 126992, 126993, 126996, 127250, 127251, 127257, 127258, 128259, 128267, 129025, 129026, 129029, 129033, 129283, 129284, 129285, 130306, 130310, 130312, 130313, 130314	
NMEA0183	1 Integrated Output Port		
Interface (NMEA0183)	Output	CUR, DPT, GGA, GSA, HDG, HDT, MDA, MTW, MWV, RSA, ROT, VDM, VHW, VTG, XDR, ZDA	
LAN	1 Port (100 BASE-TX)		
USB	1 Port (USB2.0)		
Video Output	1 Port (HDMI)		
Video Input	2 Ports (NTSC/PAL)		
AUX I/O	1 Port (External Event/MOB Input/Operator Fitness/Alarm Output)		
SD Cart Slot	1 Slot (Micro SDXC, rear), 2 Slots Card Unit (optional)		
Wireless LAN	IEEE802.11b/g/n, Transmit frequency: 2.4 GHz band		
Transducer	1 Port		
<b>ENVIRONMENT</b>			
Temperature (IEC60945)	-15°C to +55°C		
Waterproofing	IP56		
<b>POWER</b>			
	12-24 VDC		
	3.6-1.8 A		

\*\* Not available with DRS4DL

Multi Function Display (Tabletop Mount) TZTL15F  
5.5 kg 12.1 lb



Bracket is optional supply.

Multi Function Display (Flush Mount) TZTL15F  
4.8 kg 10.6 lb

